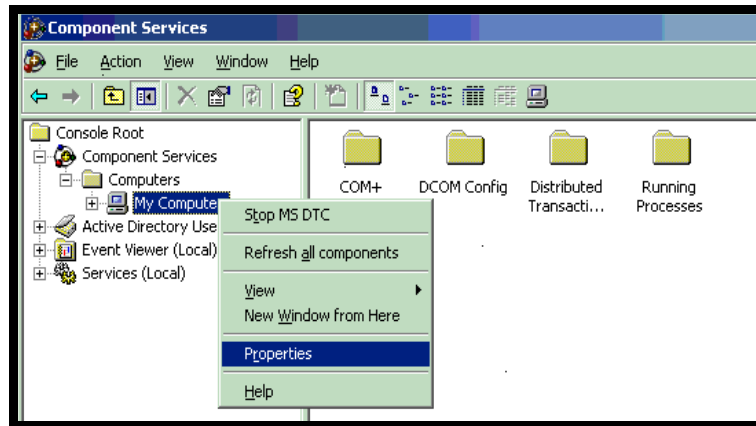


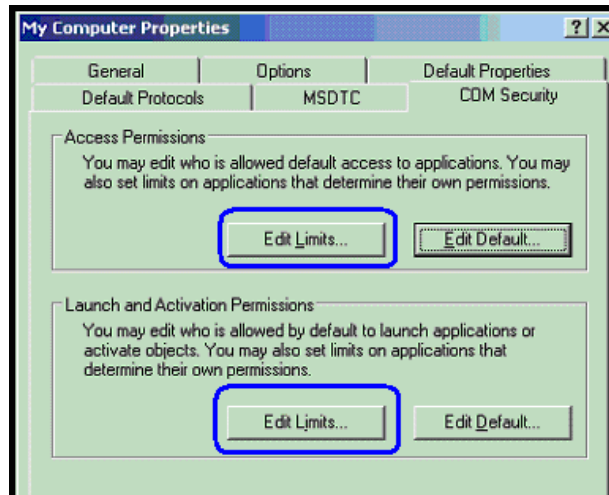
## Special Configuration for ScanRouter Professional/Enterprise on Windows 2003 with SP1

1. In order to use ScanRouter Professional/Enterprise on Windows 2003 with SP1 installed, the following settings will be required even if Windows firewall is turned OFF.

- I. Type “dcomcnfg” from the Start, Run... menu.
- II. This will display “Component Services”.
- III. Under “Console Root > Component Services > Computers”, right-click “My Computer” and select “Properties”

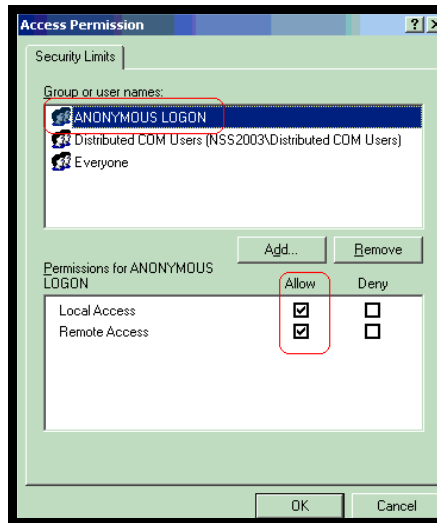


IV. Under the “COM Security” tab, do the following.

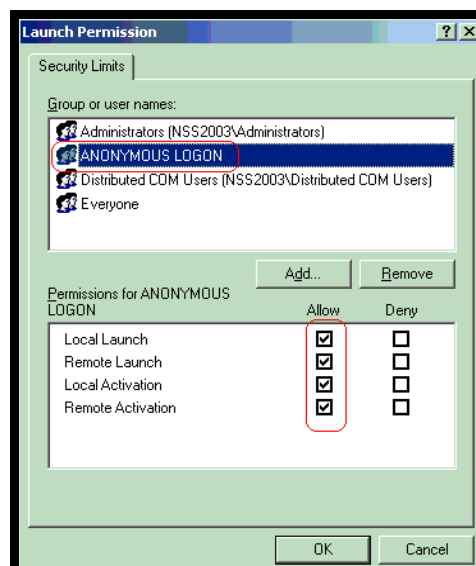


A) Click the “Edit Limits...” button under “Access Permissions”.

- B) Configure ANONYMOUS LOGON: Put a check in both “Local Access” and “Remote Access”. Click Ok.



- C) Click the “Edit Limits...” button under “Launch and Activation Permissions”.
- D) Add ANONYMOUS LOGON: If “ANONYMOUS LOGON” is not listed in “Group or user names:”, please add it.
- E) Configure ANONYMOUS LOGON: Put a check in “Local Launch”, “Remote Launch”, “Local Activation” and “Remote Activation”.

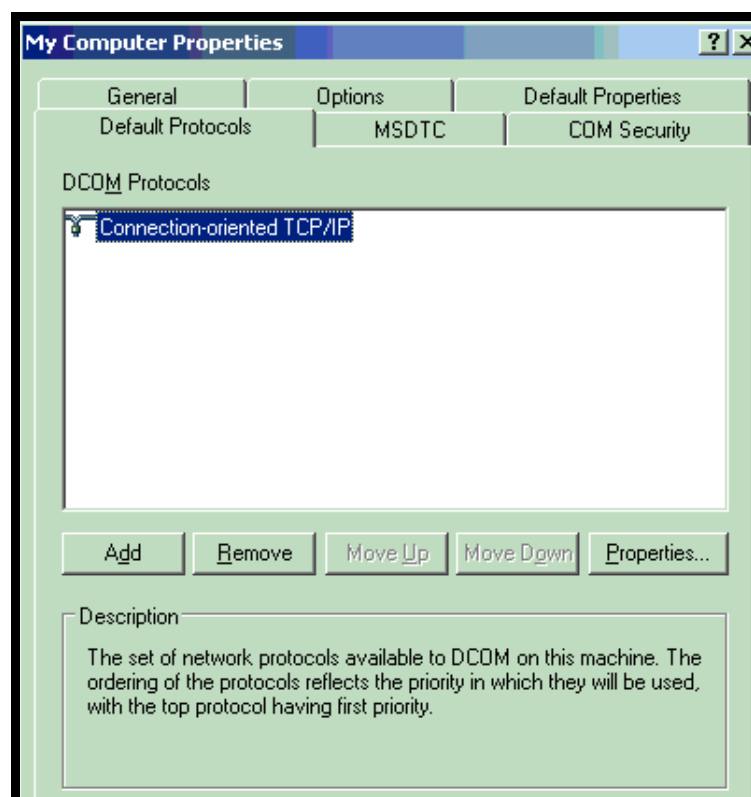


**2. In order to use ScanRouter Professional/Enterprise on Windows 2003 SP1, the following settings will be required if Windows firewall is turned ON.**

Note: In addition to the procedure #2 described here, procedure #1 described previously must also be done.

2-1. DCOM Settings

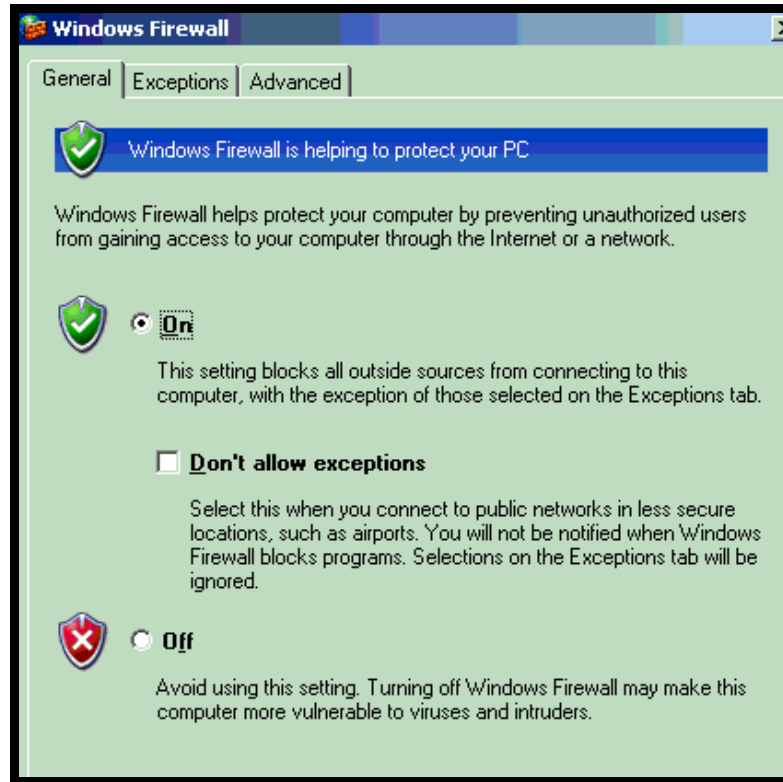
- I. Type “dcomcnfg” from the Start, Run... menu.
- II. This will display “Component Services”.
- III. Under “Console Root > Component Services > Computers”, right-click “My Computer” and select “Properties” .
- IV. Under the “Default Protocols” tab, do the following.



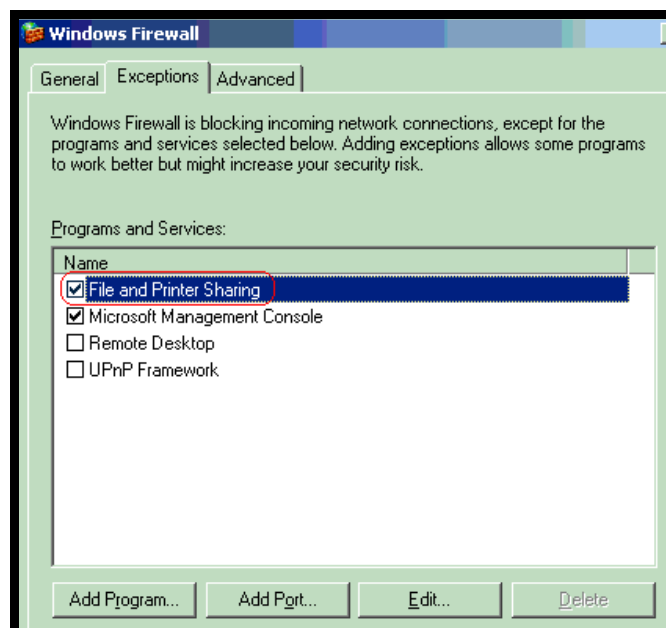
- A) Check that “Connection-oriented TCP/IP” is listed under “DCOM Protocols”.
- B) Select “Connection-oriented TCP/IP” and click the “Properties” button.
- C) Click the “Add” button and input a range of ports to be used by ScanRouter Professional/Enterprise. We recommend adding 10 ports or so. ScanRouter only needs 3 but, in the event that other applications use some of ScanRouter’s ports you might need extras. The 10 randomly selected ports must be between 1024 and 65535.

Note: Other applications and the OS may be using all of the ports in the range that you specified. Therefore, after finishing this entire procedure and rebooting the PC, check that DeskTopBinder or Auto Document Link (on a client PC) is able to connect to ScanRouter. If it isn’t, please try inputting a different range of ports.

- V. Click Ok to apply the new settings and close “Component Services”.
- 2-2. Windows Firewall Settings
- I. Open the Windows Firewall settings dialogue.

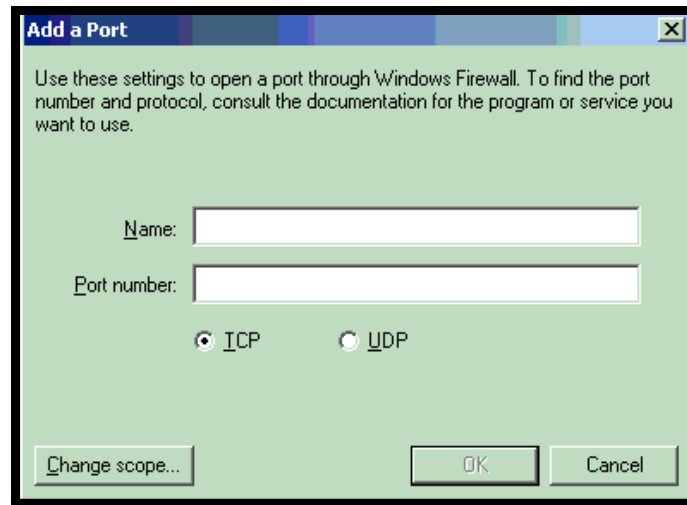


- A) Under the “Exceptions” tab, confirm that “File and Printer Sharing” is listed in the “Program and Service” list.



- B) Click the “Add Port...” button and add the following ports:  
TCP 135, 389, 3670, 50109

UDP 50304, 50410



Close the Windows Firewall dialogue.

- II. Reboot the PC.

Note: If you are using a secondary ScanRouter server, you need to add “DdsAselecter.exe” and “DdsSlaveSync.exe” under the Windows Firewall exceptions tab. This can be done using the “Add Programs” button. This only needs to be done on the Primary server. It does not need to be done on the secondary server.

**3. Some other phenomena may be encountered when using ScanRouter with Windows Server2003 SP1. Some workarounds for these phenomena are given.**

**Phenomenon 1:**

If the user attempts to open SR Manager, a Windows Security Alert will be displayed (**See figure12**).

**Workarounds:**

Select “Unblock”. After doing this once, this alert will not be displayed again.

**Phenomenon 2:**

If the user attempts to install any ScanRouter Server product on a Windows 2003 SP1 server and the Windows Firewall in enabled, a Windows Security Alert will be displayed (**See figure13**).

Note: This only happens if Apache is selected as the web server.

**Workarounds:**

Select “Unblock”. After doing this once, this alert will not be displayed again.