

- LimeWire PRO 4.8.1
- Microsoft Office FrontPage 2003
- Microsoft Office Word 2003
- Microsoft Virtual PC
- Mozilla Firefox
- Mozilla Thunderbird
- Nero Burning ROM
- PowerDVD
- Programs
- Favorites
- Documents
- Settings**
- Search
- Help and Support
- Run...
- Log Off arm2811...
- Shut Down...



- Control Panel
- Network Connections
- Printers and Faxes**
- Taskbar and Start Menu

- Add Printer**
- Gestetner D5c38 PCL 5c on TECHSTAR-SRVR
- Gestetner D5c38 PS on TECHSTAR-SRVR
- Gestetner P7020 PCL 5e on TECHSTAR-SRVR
- Gestetner-4502-PCL on TECHSTAR-SRVR
- Gestetner-4502-PS on TECHSTAR-SRVR
- Microsoft Office Document Image Writer
- Gestetner D5m635SP



PartyPoker



Welcome to the Add Printer Wizard

This wizard helps you install a printer or make printer connections.



If you have a Plug and Play printer that connects through a USB port (or any other hot pluggable port, such as IEEE 1394, infrared, and so on), you do not need to use this wizard. Click Cancel to close the wizard, and then plug the printer's cable into your computer or point the printer toward your computer's infrared port, and turn the printer on. Windows will automatically install the printer for you.

To continue, click Next.

Local or Network Printer



The wizard needs to know which type of printer to set up.

Select the option that describes the printer you want to use:

- Local printer attached to this computer
- Automatically detect and install my Plug and Play printer
- A network printer, or a printer attached to another computer



To set up a network printer that is not attached to a print server, use the "Local printer" option.

< Back

Next >

Cancel

Select a Printer Port

Computers communicate with printers through ports.



Select the port you want your printer to use. If the port is not listed, you can create a new port.

Use the following port: LPT1: (Recommended Printer Port)

Note: Most computers use the LPT1: port to communicate with a local printer. The connector for this port should look something like this:



Create a new port:
Type of port:

Standard TCP/IP Port

Local Port

Microsoft Document Imaging Writer Monitor

Standard TCP/IP Port

< Back

Next >

Cancel

Select a Printer Port

Computers communicate with printers through ports.



Select the port you want your printer to use. If the port is not listed, you can create a

Add Standard TCP/IP Printer Port Wizard

Welcome to the Add Standard TCP/IP Printer Port Wizard

You use this wizard to add a port for a network printer.

Before continuing be sure that:

1. The device is turned on.
2. The network is connected and configured.

To continue, click Next.

< Back

Next >

Cancel

Select a Printer Port

Computers communicate with printers through ports.



Select the port you want your printer to use. If the port is not listed, you can create a

Add Standard TCP/IP Printer Port Wizard**Add Port**

For which device do you want to add a port?



Enter the Printer Name or IP address, and a port name for the desired device.

Printer Name or IP Address:

Port Name:

< Back

Next >

Cancel

Select a Printer Port

Computers communicate with printers through ports.



Select the port you want your printer to use. If the port is not listed, you can create a

Add Standard TCP/IP Printer Port Wizard**Completing the Add Standard TCP/IP Printer Port Wizard**

You have selected a port with the following characteristics.

SNMP: Yes

Protocol: RAW, Port 9100

Device:

Port Name:

Adapter Type:

Note in previous Screen if it doesn't recognize the NIC Settings for custom are RAW, Port 9100

To complete this wizard, click Finish.

< Back

Finish

Cancel

Install Printer Software



The manufacturer and model determine which printer software to use.



Select the manufacturer and model of your printer. If your printer came with an installation disk, click Have Disk. If your printer is not listed, consult your printer documentation for compatible printer software.

Manufacturer	Printers
Fuji Xerox	Gestetner GLP800-Scout v52.3
Fujitsu	Gestetner 3355 PCL 5e
GCC	Gestetner 3370 PCL 5e
Generic	Gestetner DSm622 PS
Gestetner	Gestetner DSm627 PS
HP	



This driver is digitally signed.

[Tell me why driver signing is important](#)

Windows Update

Have Disk...

< Back

Next >

Cancel

Install Printer Software

The manufacturer and model determine which printer software to use.

**Install From Disk**

Insert the manufacturer's installation disk, and then make sure that the correct drive is selected below.

Browse for the printer Drivers that you would like to use most likely found on the CD Rom that came with the machine.

Copy manufacturer's files from:

D:\DRIVERS\PCL5e\WIN2K_XP\ENGLISH\DISK1

Ma
Fuj
Fuj
GC
Ge
Ge
UP



Install Printer Software

The manufacturer and model determine which printer software to use.



Select the manufacturer and model of your printer. If your printer came with an installation disk, click Have Disk. If your printer is not listed, consult your printer documentation for compatible printer software.

Printers

- Gestetner DSm635/635G PCL 5e
- Gestetner DSm645/645G PCL 5e

Select the Correct Model of
your Machine.



This driver is digitally signed.

[Tell me why driver signing is important](#)

Windows Update

Have Disk...

< Back

Next >

Cancel

Name Your Printer

You must assign a name to this printer.



Type a name for this printer. Because some programs do not support printer and server name combinations of more than 31 characters, it is best to keep the name as short as possible.

Printer name:

Do you want to use this printer as the default printer?

- Yes
 No

It will assign a default name if you would
Like a different one change it now.

< Back

Next >

Cancel

Printer Sharing



You can share this printer with other network users.

If you want to share this printer, you must provide a share name. You can use the suggested name or type a new one. The share name will be visible to other network users.

Do not share this printer

Share name:

If you are installing this on a server and want it shared select share name and give it a short but unique name.

< Back

Next >

Cancel

Location and Comment



You have the option of supplying a location and description of this printer.

You can describe the location and capabilities of this printer. This information may be helpful to users.

Location:

Comment:

< Back

Next >

Cancel

Print Test Page

To confirm that the printer is installed properly, you can print a test page.



Do you want to print a test page?

Yes

No

< Back

Next >

Cancel



Completing the Add Printer Wizard

You have successfully completed the Add Printer Wizard.
You specified the following printer settings:

Name: Gestetner DS m635/635G PCL 5e
Share name: Gest635sp
Port: IP_192.168.1.105
Model: Gestetner DS m635/635G PCL 5e
Default: No
Test page: Yes
Location:
Comment:

To close this wizard, click Finish.

< Back

Finish

Cancel



Completing the Add Printer

Gestetner DS635/635G PCL 5e

A test page is now being sent to the printer. Depending on the speed of your printer, it may take a minute or two before the page is printed.

The test page briefly demonstrates the printer's ability to print graphics and text, and it provides technical information about the printer driver.

If the test page printed, click OK.

If the test page did not print, click Troubleshoot.

OK

Troubleshoot...

Add Printer Wizard.

s:

PCL 5e

PCL 5e

To close this wizard, click Finish.

< Back

Finish

Cancel

- LimeWire PRO 4.8.1
- Microsoft Office FrontPage 2003
- Microsoft Office Word 2003
- Microsoft Virtual PC
- Mozilla Firefox
- Mozilla Thunderbird
- Nero Burning ROM
- PowerDVD
- Programs
- Favorites
- Documents
- Settings
- Search
- Help and Support
- Run...
- Log Off arm2811...
- Shut Down...

- Control Panel
- Network Connections
- Printers and Faxes
- Taskbar and Start Menu

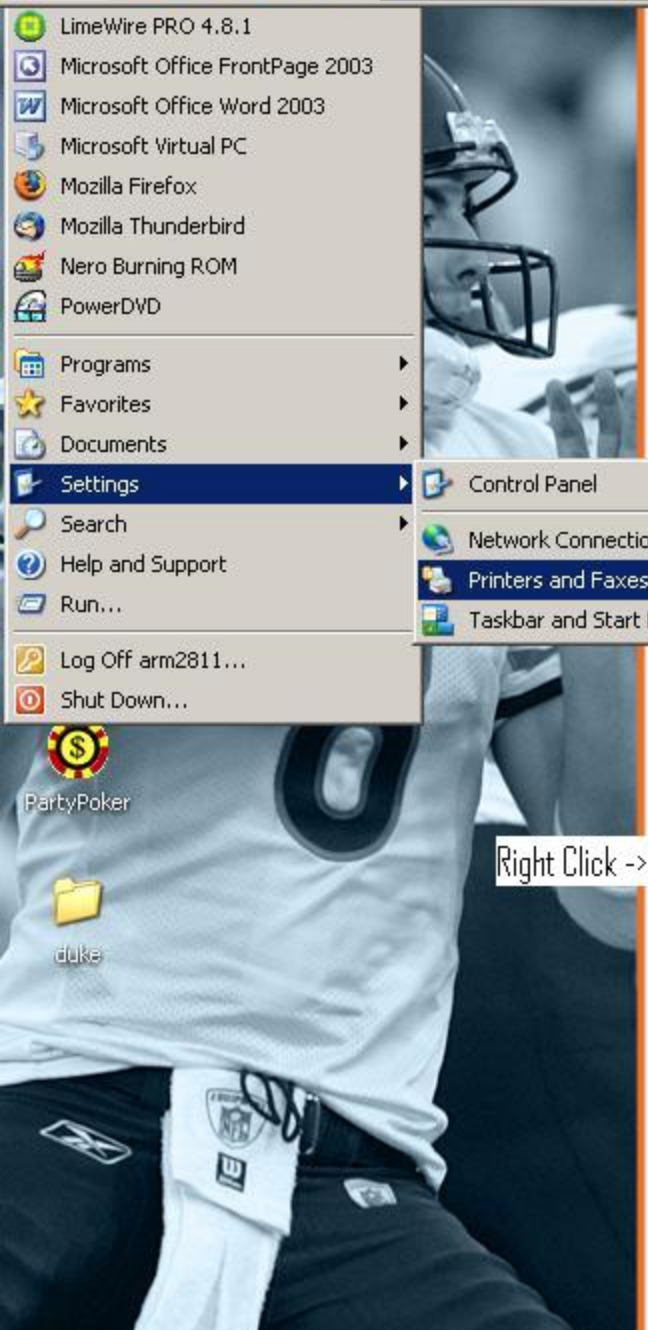
- Add Printer
- Gestetner D5c38 PCL 5c on TECHSTAR-SRVR
- Gestetner D5c38 PS on TECHSTAR-SRVR
- Gestetner P7020 PCL 5e on TECHSTAR-SRVR
- Gestetner-4502-PCL on TECHSTAR-SRVR
- Gestetner-4502-PS on TECHSTAR-SRVR
- Microsoft Office Document Image Writer
- Gestetner D5m635/...

Right Click ->

- Open**
- Set as Default Printer
- Printing Preferences...
- Pause Printing
- Sharing...
- Use Printer Offline
- Create Shortcut
- Delete
- Rename
- Sort by Name
- Properties

PartyPoker

duke



General | Sharing | Ports | Advanced | Color Management | Security | Accessories | Advanced Options | Paper Size Settings


These icons display help ->



Select any options that are installed on the machine (The Configuration Page can help here).

Options

- Large Capacity Tray
-  Copy Tray
- Interposer
- Finisher 3000M
-  Finisher 3000B
-  Booklet Finisher
- Mailbox
-  Z-folding unit

 Punch Unit:None 

Total Memory:

384MB 

Update Now

Restore Defaults

OK

Cancel

Apply

Help

General | Sharing | Ports | Advanced | Color Management | Security | Accessories | Advanced Options | Paper Size Settings

Group or user names:

- Administrators (SHOP\Administrators)
- CREATOR OWNER
- Everyone
- Power Users (SHOP\Power Users)

Add...

Remove

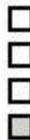
Permissions for Everyone

Allow

Deny

- Print
- Manage Printers
- Manage Documents
- Special Permissions

Allow for all will insure all features work correctly.



For special permissions or for advanced settings, click Advanced.

Advanced

OK

Cancel

Apply

Help